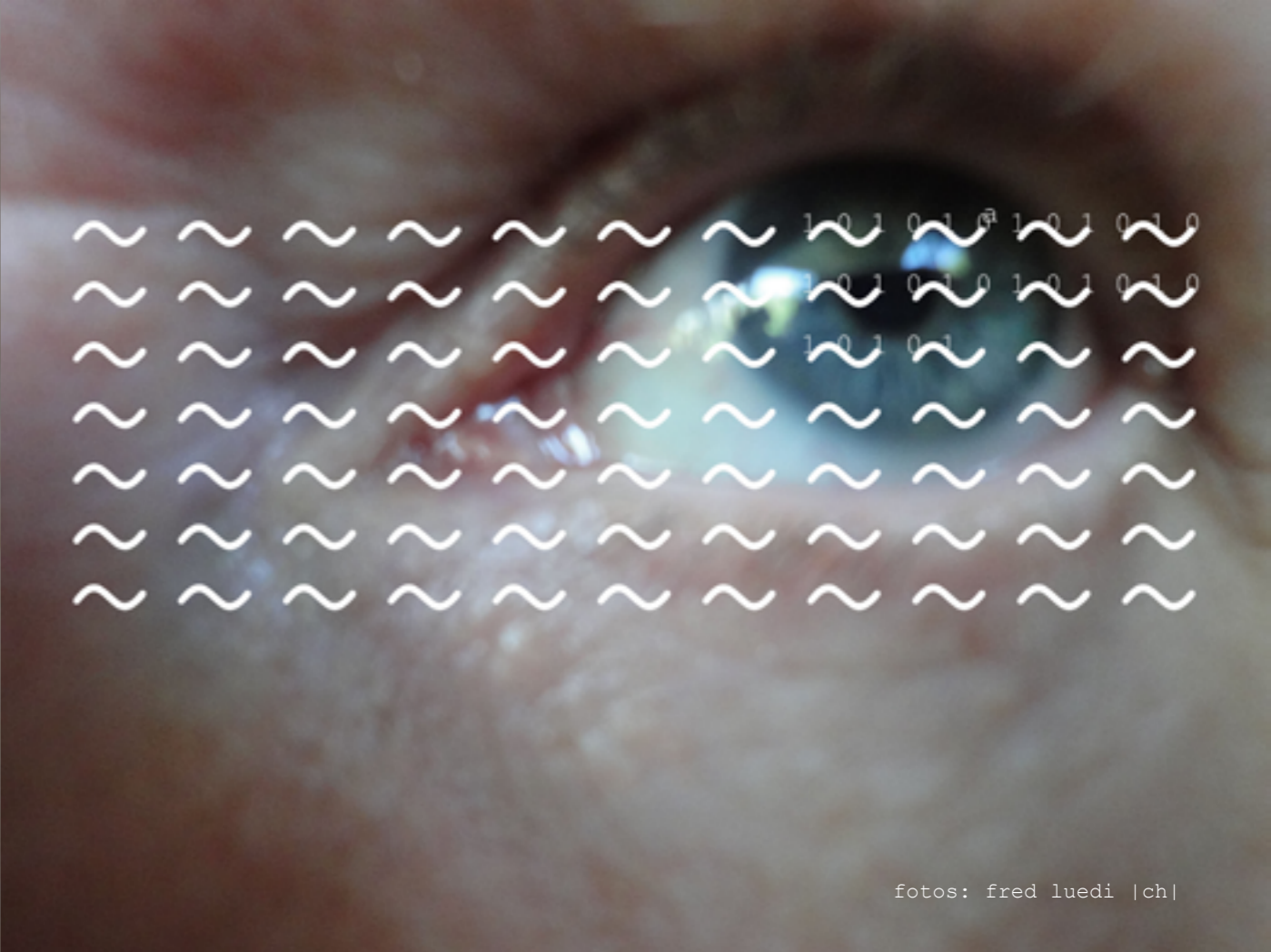




susanne muller performance at kodari |china tibet nepal| 2011©
die erweiterung der pupille beim eintritt ins hochgebirge
dilating pupil at high mountains
9dragonheads environment art symposium chamagodo 2011

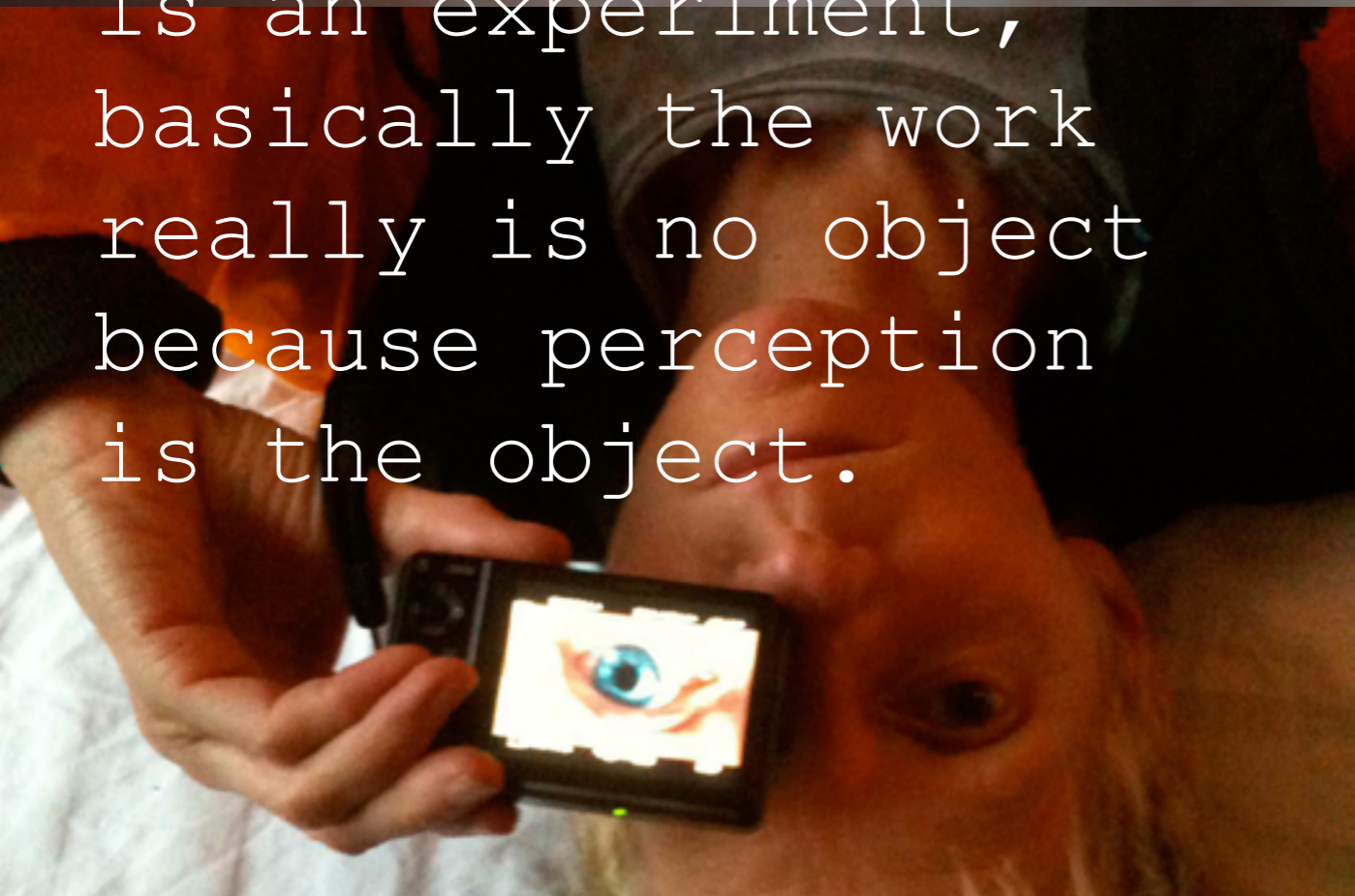


fotos: fred luedi |ch|



„life consists of
movement, that is
its nature“.

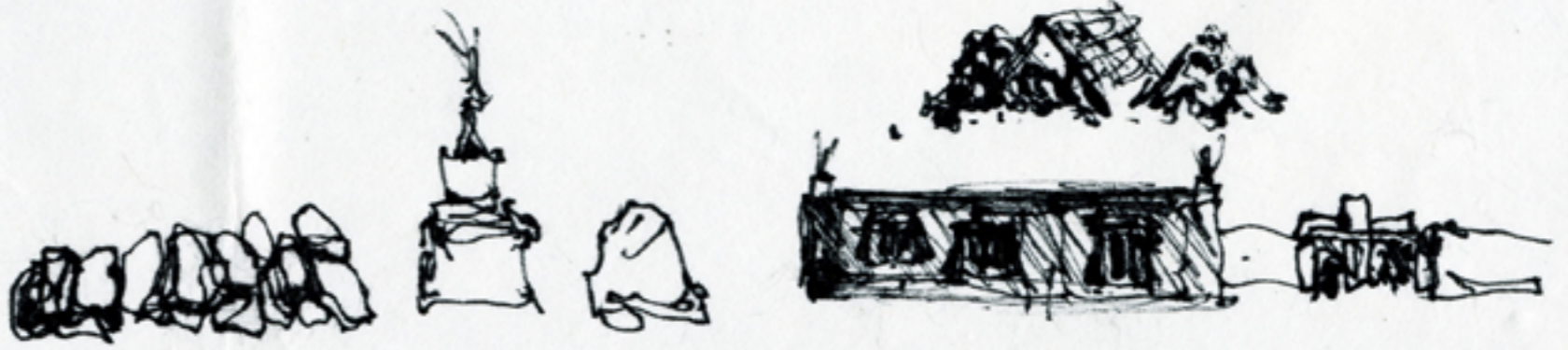
I will climb up to
mt. everest like a
performance. artist
be worried about this
climb up. but art
is an experiment,
basically the work
really is no object
because perception
is the object.





kunming china drawing charcoal on paper nomadic map 143/77

Kadari



ateliers
neumarktstrasse 64

lokal
int...

susanne müller | ch |

3 paw

1st nine dragon heads international environment art symposium biel bienne switzerland 2011 10.12.-10.21.
°zentralplatz

school for art and design B:B
.castle of nidau

la gare
station

.lago lodge
hostel

art étage

.strandbad lido

werft
shipyard

port

kleinboot
boot/hafen

<. < twann

<. << | atelier prêles

lac de bienne bielersee

absolut

relativ

$$p = 0$$

$$dp = \rho \cdot g \cdot dh$$

$$p = \rho \cdot g \cdot h$$

$$p_{tot} = p_{stat} + \rho \cdot g \cdot h$$



paw's

susanne muller|ch|
 chalk drawing on floor
 port biel bienne switzerland 2011
 homage to: my father robert muller
 scientist hydraulik engineer



| performance |

		centre pasquart biel bienne									
			tent nomadic			nine dragon hesds					
				performances and exhibition at galerie							
					art étage						
								by noemi sandmeier			